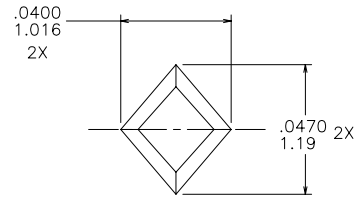
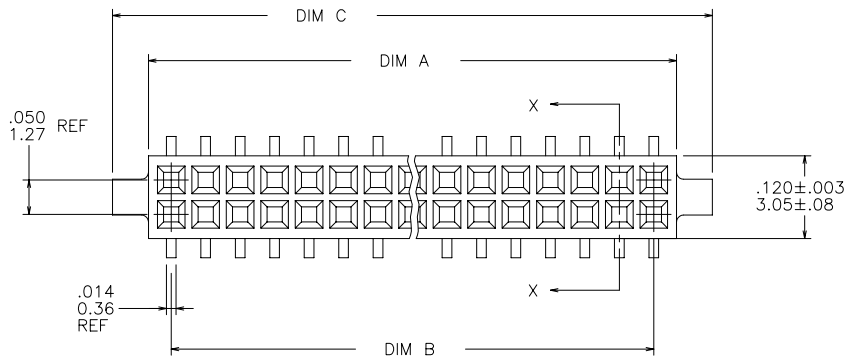
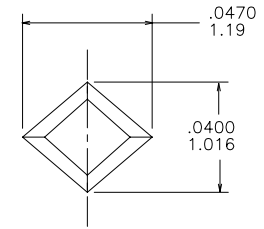


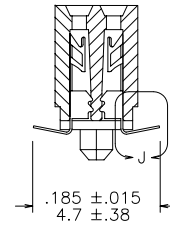
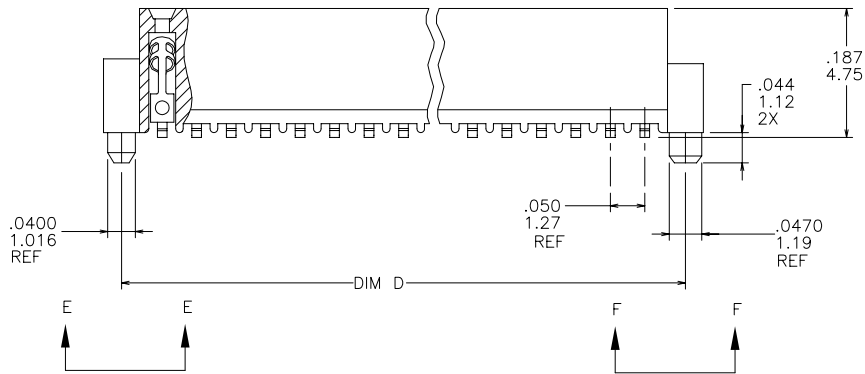
PRODUCT NUMBER
SEE TABLE



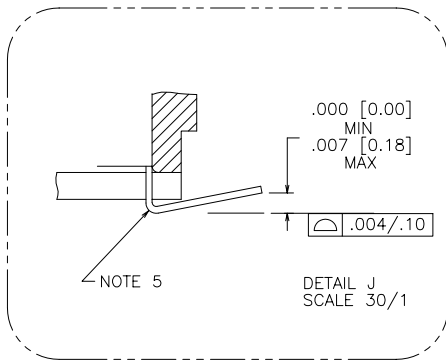
VIEW E-E
SCALE 40/1



VIEW F-F
SCALE 40/1



SECTION X-X



DETAIL J
SCALE 30/1

mat'l. code		surface		tolerance		projection		product family	
-		ISO 1302 ✓		ISO 406 ISO 1101				RIBCAGE	
ltr		ecn no dr		date		tolerances unless otherwise specified		title	
E	V80862	EPK	6/10/98	angles		.xx±.01/0.3		.050/1.27 CC V.C.C. SMT,	
F	V10138	DLW	1/18/01	linear		.xxx±.005/0.13		W/.044/1.12 SHORT PEG	
G	V10944	CRG	3/5/01	0°±x'		.xxxx±.0020/0.051		scale 4:1	
H	V11674	CRG	7/27/01	dr		M. CORNMAN 8/13/93		dwg no	
J	M05-0123	MHT	6/07/05	enrg		J. SHUEY 8/13/93		sheet 1 of 2 size	
K	M06-0225	ERE	06/12/06	chr		C. GINGRICH 8/13/93		93942 A3	
L	M06-0370	MHT	9/26/06	appd		J. SHUEY 8/13/93		type Product Customer Drawing	
sheet	revision	L	L						
index	sheet	1	2						

FCJ
FCIconnect.com

Copyright FCI

PRODUCT NO.	SIZE	DIM A	DIM B	DIM C	DIM D
93942-605	2 X 5	.266/6.76	.200/5.08	.370/9.40	.3200/8.128
-610	2 X 10	.516/13.11	.450/11.43	.620/15.75	.5700/14.478
-615	2 X 15	.766/19.46	.700/17.78	.870/22.10	.8200/20.828
-620	2 X 20	1.016/25.81	.950/24.13	1.120/28.45	1.0700/27.178
-625	2 X 25	1.266/32.16	1.200/30.48	1.370/34.80	1.3200/33.528
-630	2 X 30	1.516/38.51	1.450/36.83	1.620/41.15	1.5700/39.878
-635	2 X 35	1.766/44.86	1.700/43.18	1.870/47.50	1.8200/46.228
-640	2 X 40	2.016/51.21	1.950/49.53	2.120/53.85	2.0700/52.578
-645	2 X 45	2.266/57.56	2.200/55.88	2.370/60.20	2.3200/58.928
93942-650	2 X 50	2.516/63.91	2.450/62.23	2.620/66.55	2.5700/65.278

NOTES:

- ① HOUSING MATERIAL :
GLASS FILLED THERMOPLASTIC FLAME RETARDANT PER UL 94V-0
COLOR: BLACK
- ② TERMINAL MATERIAL : BeCu
- ③ TERMINAL PLATING :
6XX 30u"/.76u MIN HARD GOLD OVER Ni ON CONTACT ZONES.
100u"/2.54u MIN Sn OVER Ni IN SOLDERING ZONES.
OTHERWISE GOLD FLASH OR UNPLATED.
4. APPLICATION INFORMATION :
 - A. RECOMMENDED MOUNTING PAD PATTERN IS SHOWN IN FIGURE "A".
 - B. MATING PINS TO BE .0176/.447 TO .0181/.459 THICK.
 - C. MATING PIN TIPS TO BE IN TRUE POSITION TO MATING GRID WITHIN .008/.20 DIA.
 - D. SUGGESTED MATING PIN LENGTH .130/3.30 ±.010/.25.
- ⑤ LEAD TIPS TO BE ABOVE HEEL UP TO .007/.18 MAX.
COPLANARITY TO BE MEASURED AT LOWEST POINT (HEEL).
6. ADD "CT" TO END OF DASH NUMBER FOR CONNECTOR WITH VACUUM CAP IN TUBE.
- ⑦ ADD "LF" SUFFIX AT THE END OF PART NUMBER FOR LEAD FREE OPTION.
- ⑧ THIS PRODUCT MEETS EUROPEAN UNION DIRECTIVES AND OTHER COUNTRY REGULATION AS DESCRIBED IN GS-22-008.
9. THE HOUSING WILL WITHSTAND EXPOSURE TO 260°C PEAK TEMPERATURE FOR 20 SECONDS IN A CONVECTION, INFRA-RED OR VAPOR PHASE REFLOW OVEN. SEE APPLICATION NOTES/PROCEDURES IF THEY ARE AVAILABLE.

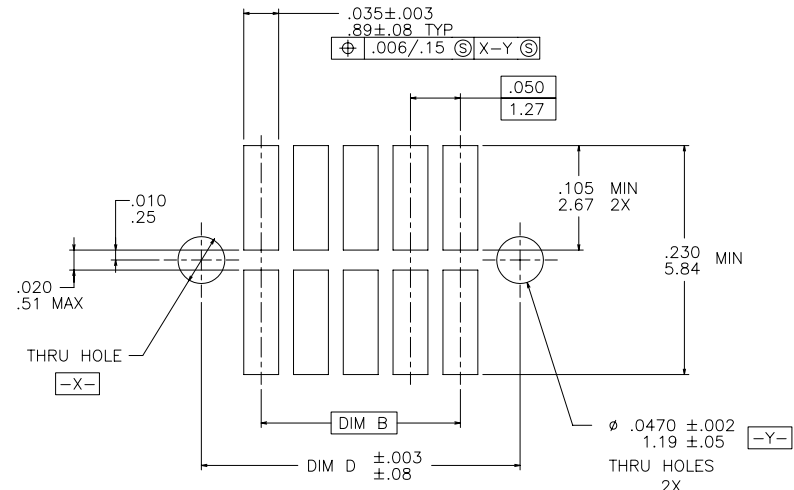


FIGURE A
RECOMMENDED
P.C.B. LAYOUT

mat'l. code		surface		tolerance		projection		product family	
-		ISO 1302		ISO 406		INCH/MM		RIBCAGE	
ltr		ecn		no		date		title	
L								.050/1.27 CC V.C.C. SMT, W/.044/1.12 SHORT PEG	
angles		linear		.xx±.01/0.3		scale 4:1		dwg no	
0'±x'				.xxx±.005/0.13		FCJ		sheet 2 of 2 size	
				.xxxx±.0020/0.051				93942	
		dr		M. CORNMAN		8/13/93		A3	
		enfr		J. SHUEY		8/13/93			
		chr		C. GINGRICH		8/13/93			
		appd		J. SHUEY		8/13/93		type Product Customer Drawing	
sheet index		revision sheet							